



Co2 Glass Laser Marking Machine for Leather Wood

SUNNA Co2 Glass Laser Marking Machine for Leather Wood-- widely used in food packaging, beverage packaging, pharmaceutical packaging, building ceramics, clothing accessories, leather, buttons, fabric cutting, craft gifts, rubber products, stone, electronic components, mobile phone shell, notebook, and flat shell, stripping, film cutting, backlight plate, PCB bar code, shell nameplate, etc.

1. Product Introduction

The CO₂ laser is a gas laser with a wavelength of 10.6μm, which belongs to the mid-infrared frequency band. The CO₂ laser has relatively high power and relatively high electro-optical conversion efficiency and is currently the most powerful laser. Carbon dioxide lasers use CO₂ gas as the working substance. When CO₂ and other auxiliary gases are charged into the discharge tube when a high voltage is applied to the electrode, a glow discharge is generated in the discharge tube, and the gas molecules can be released to remove the laser light. After amplifying the released laser energy, laser processing can be performed.

SUNNA Co2 Glass Laser Marking Machine for Leather Wood has the following features:

1. High reliability and long continuous working time;
2. The marking is clear, complete, and beautiful;
3. Rich software support, which can collect and make various marks;
4. Non-contact processing ensures the original accuracy of the workpiece surface, can scribe a variety of materials and maintain it permanently, fast installation, and convenient maintenance.

Co₂ Glass Laser Marking Machine for Leather Wood fabric, jeans, and textile marking & cutting. Now the cheap CO₂ laser marking system for sale at affordable price

2. Product Parameter (Specification)

Model	SN-F
Marking Area	110*110mm/150*150mm/175*175mm/200*200mm/300*300mm
Laser Power	Reci W2/W4/W6/W8
Worktable	Fixed high quality aluminum worktable
Wave Length	10.6μm
Repetition Frequency Range	20-100KHZ
Response time	0.5ms
Engraving lines	1-10 lines(in the engraving area)
Output Beam Diameter	±0.5mm
Power Range	0-100%
Laser Module Life	>10000 hours
Engraving Depth	Adjustable according to materials
Marking Format	Graphics, text, bar codes, QRcode, automatically date, batch number, serial number, etc.
Graphic format supported	Ai, plt, ;dxf, dst, svg, nc, bmp, jpg, jpeg, gif, tga, png, tiff, tif
Computer System	WINDOWS XP/Win7/8/10 32/64bits
Minimum Character	0.15mm
Minimum Linear Width	0.1mm
Cooling way	Water Cooling
Maxi Marking Speed	8000mm/s
Data Transfer:	USB2.0 transmission
Control System	EZCAD Offline Controller
Compatible Software	CorelDraw, AutoCAD,Adobe Illustrator,Cadian

Total Power	500W
Power Supply	220V±10% 50HZ or 110V±10% 60HZ
Package Weight/dimension	200KG/206*82*117CM
Option Accessories	Rotary/F-theta scan lens/Laser protection glasses/Smoke purify system

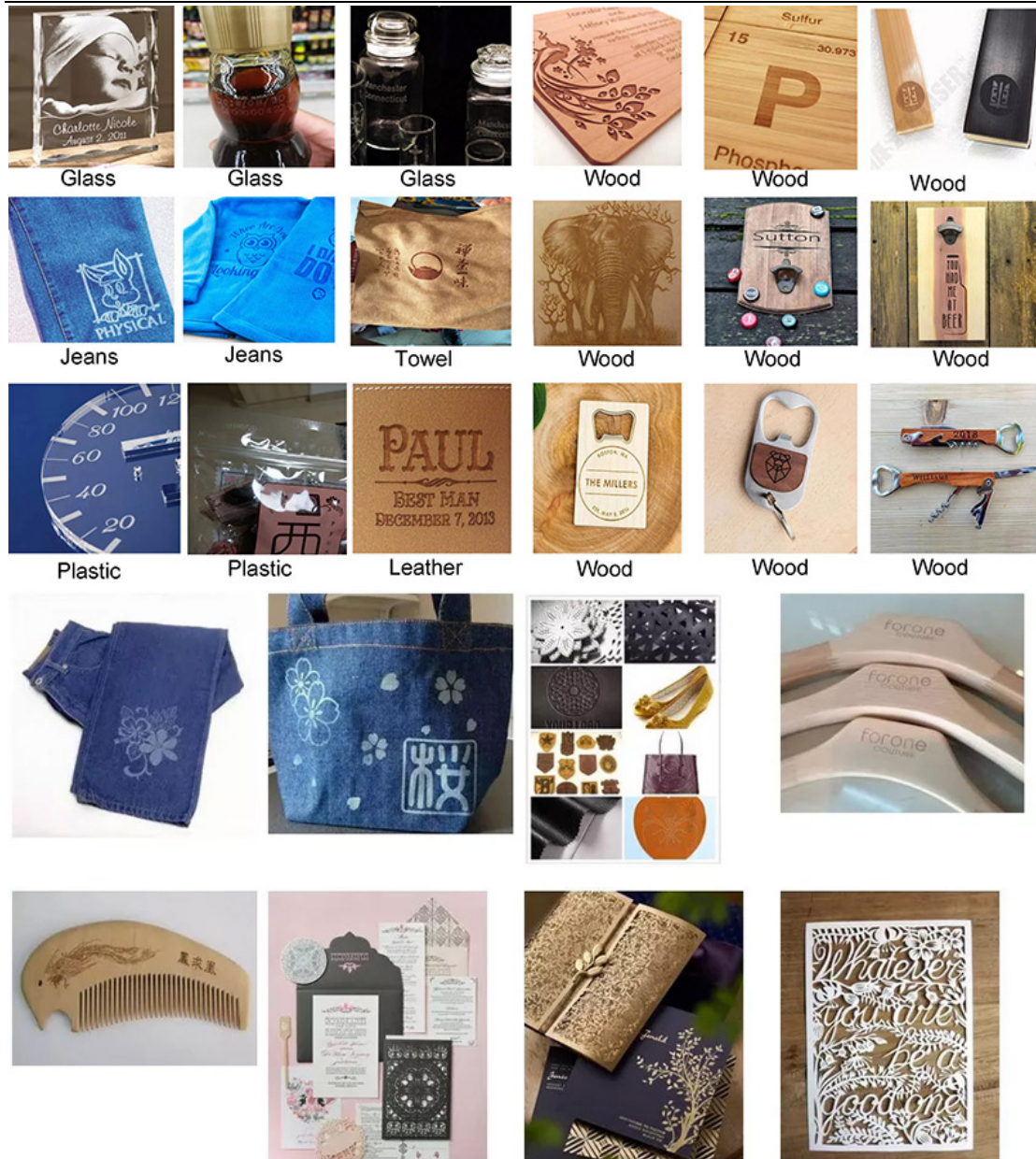
3. Product Feature and Application

Feature of Co2 Glass Laser Marking Machine for Leather Wood

1. High precision and high speed. CO2 laser marking depth is controllable optionally.
2. Wide application: The CO2 laser marker can mark most non metal materials.
3. No consumption and pollution.
4. The laser marking lines are clear, it stands heavy wearing.
5. Professional English version EZCAD software. The software works in windows environment and it is compatible with many file formats, for instance, PLT, PCW, DXF, BMP and others saved by CORELDRAW, AUTOCAD, PHOTOSHOP and other software. Meanwhile, SHX and TTF can be imported into the software directly.

Application

Co2 Glass Laser Marking Machine is used for engraving leather, wood, fabric, textile, jeans, wood, MDF, plywood, bamboo, plastic, acrylic, and glass. It is widely applied in mobile buttons, plastic translucent keys, electronic component, integrated circuits, electrical appliances, communication products, sanitary ware, tools, accessories, and other industries.



4.Product Details

- 1--Galvanometer scanner system adopts new technology,new material, new working principle of the design.
- 2--This parts adopts imported field lens and maintains advantages in high precision and small thermal drift.
- 3--The laser beam expanders can enlarge the light spot size and enhance power of light.
- 4--With water chiller,power protection, water pump fault protection ,the chiller can effectively protect against the laser failure.

After Sales Service:

1.All of laser marking machine will be fully-checked by our quality control department before the shipment.We guarantee all of our laser marking machines have a two -years warranty.

2.Training details: operation principles, system and structure, safety and maintenance, software the processing technique, and so on.

3. Numerous feedback from our clients have proven that our laser machines are stable in performance with rare malfunction. However, we would like to handle it as follows function occurs:

a.We guarantee that we will give you a clear reply within 24 hours.

b. Customer service staff will assist and guide you to analyze the malfunction in order to locate the cause.

c. If the malfunction is caused by improper operation on software and other soft faults, we will help solve the problem on line.

d.We will offer plenty of online supports, just like detailed technical and installation instructions by email,video, telephone. (Training by team viewer)

4.Maintain Fiber Laser Marking Machine

In addition to the need for stable voltage, regular cleaning of the focus lens,and it does not require any maintenance.

Tell us about your equipment needs; We have a professional design team and sales team; Provide design proposals within 24 hours; The whole SUNNA team is at your service.